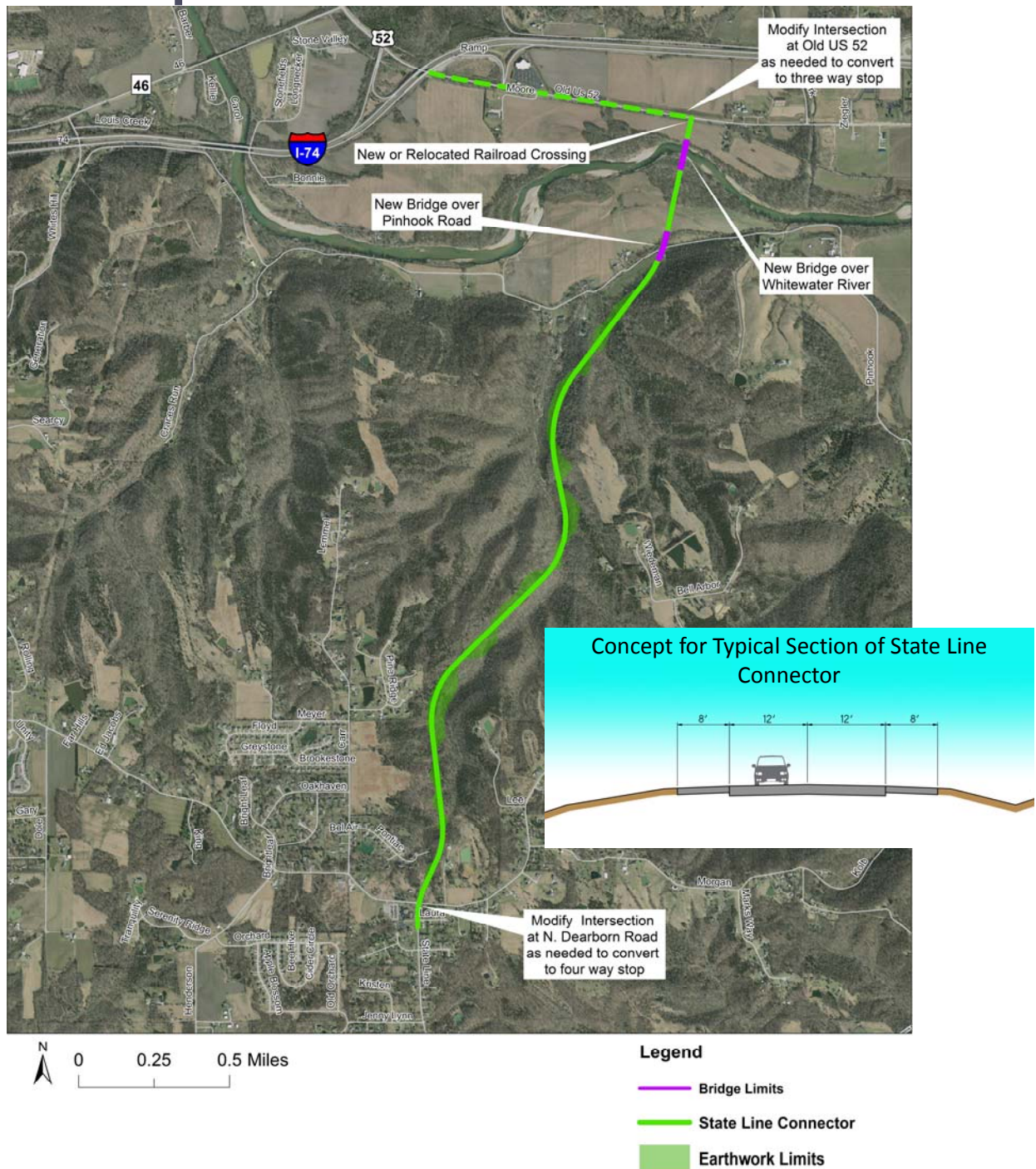


Concept 4: State Line Connector



Includes two components:

- Construction of a new roadway (State Line Connector) from North Dearborn Road to Old US 52
- Improvements as needed at North Dearborn and Old US 52 Intersections
 - Slopes vary depending on location
 - INDOT and Dearborn County permit use of 8 foot shoulders by bicyclists and pedestrians
 - Concept does NOT identify locations for future driveways; The State Line Connector is proposed to have limited access
 - Concept shows the State Line Connector spanning over existing Pinhook Road and not providing a connection or access
 - Requires relocation of an existing at grade railroad crossing
 - Includes construction of two bridges (Pinhook and Whitewater River)
 - 45 or 55 mph Design Speed