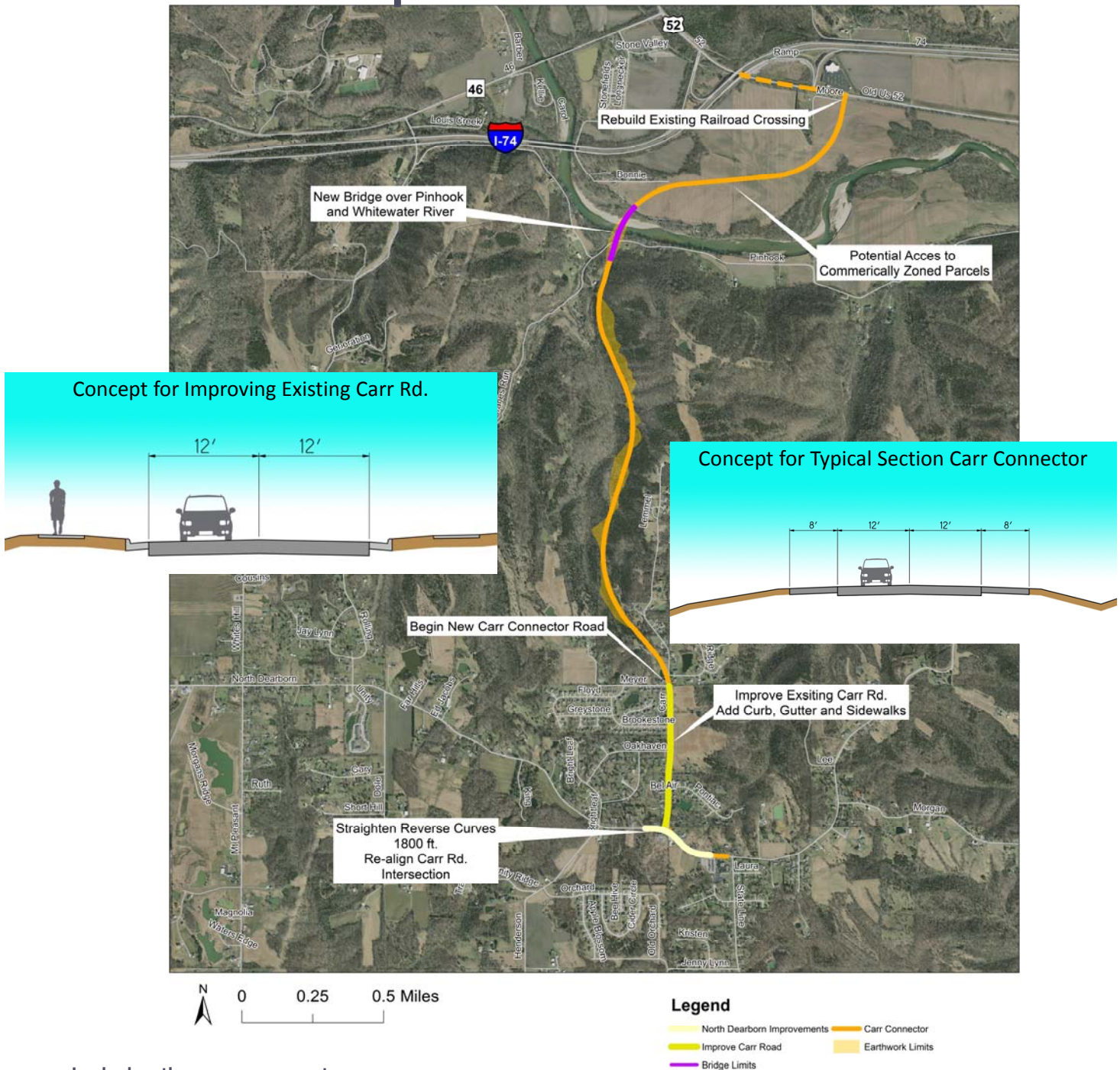


# Concept 3: Carr Connector



Includes three components:

- Improvements to existing North Dearborn Road from State Line Road to Carr Road
- Improvements to existing Carr Road from North Dearborn Road to Meyer/Pine Ridge Roads
- The construction of a new roadway (Carr Connector) from Meyer/Pine Ridge Roads to Old US 52

## Carr Road improvements

- Generally follows existing alignment
- Minor Widening
- Construct curb and gutters
- Construct sidewalks
- 35 mph Design Speed
- Maintain Existing Driveways

## Carr Connector

- Slopes vary depending on location
- 45 or 55 mph Design Speed for new connector
- INDOT and Dearborn County permit use of 8 foot shoulders by bicyclists and pedestrians
- The Carr Connector is proposed to have limited access.
- Carr Connector spans over existing Pinhook Road without providing access
- Utilizes existing at grade railroad crossing