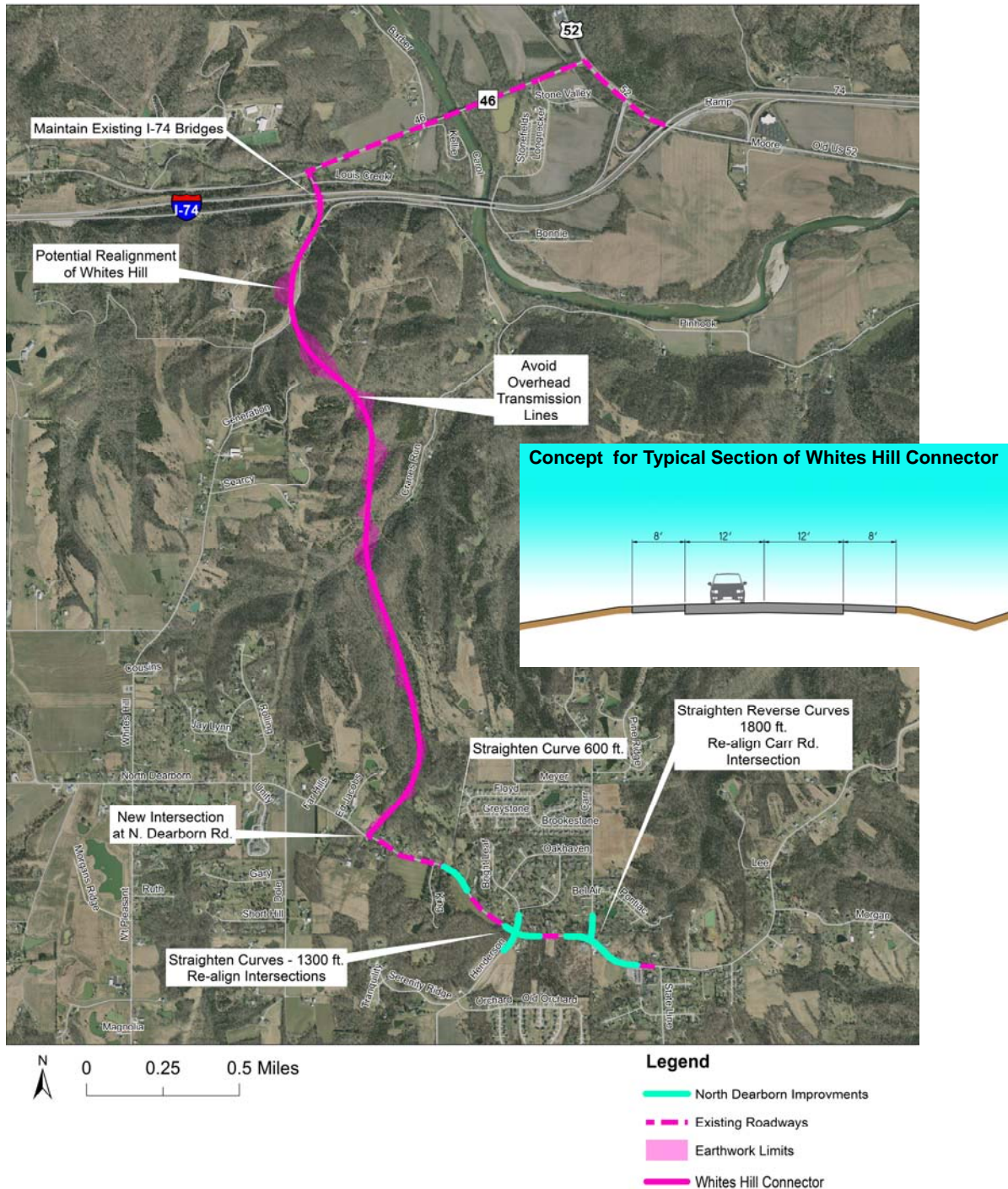


# Concept 2: Whites Hill Connector



Includes two components:

- Improvements to existing North Dearborn Road described in Concept 1 (teal lines on map)
- The construction of a new roadway (Whites Hill Connector) from North Dearborn Road to Whites Hill Road (pink line on map)
  - Slopes vary depending on location
  - INDOT and Dearborn County permit use of 8 foot shoulders by bicyclists and pedestrians
  - 45 or 55 mph Design Speed
- The Whites Hill Connector is proposed to have limited access
- Potential realignment of a portion of Whites Hill Road as noted on map