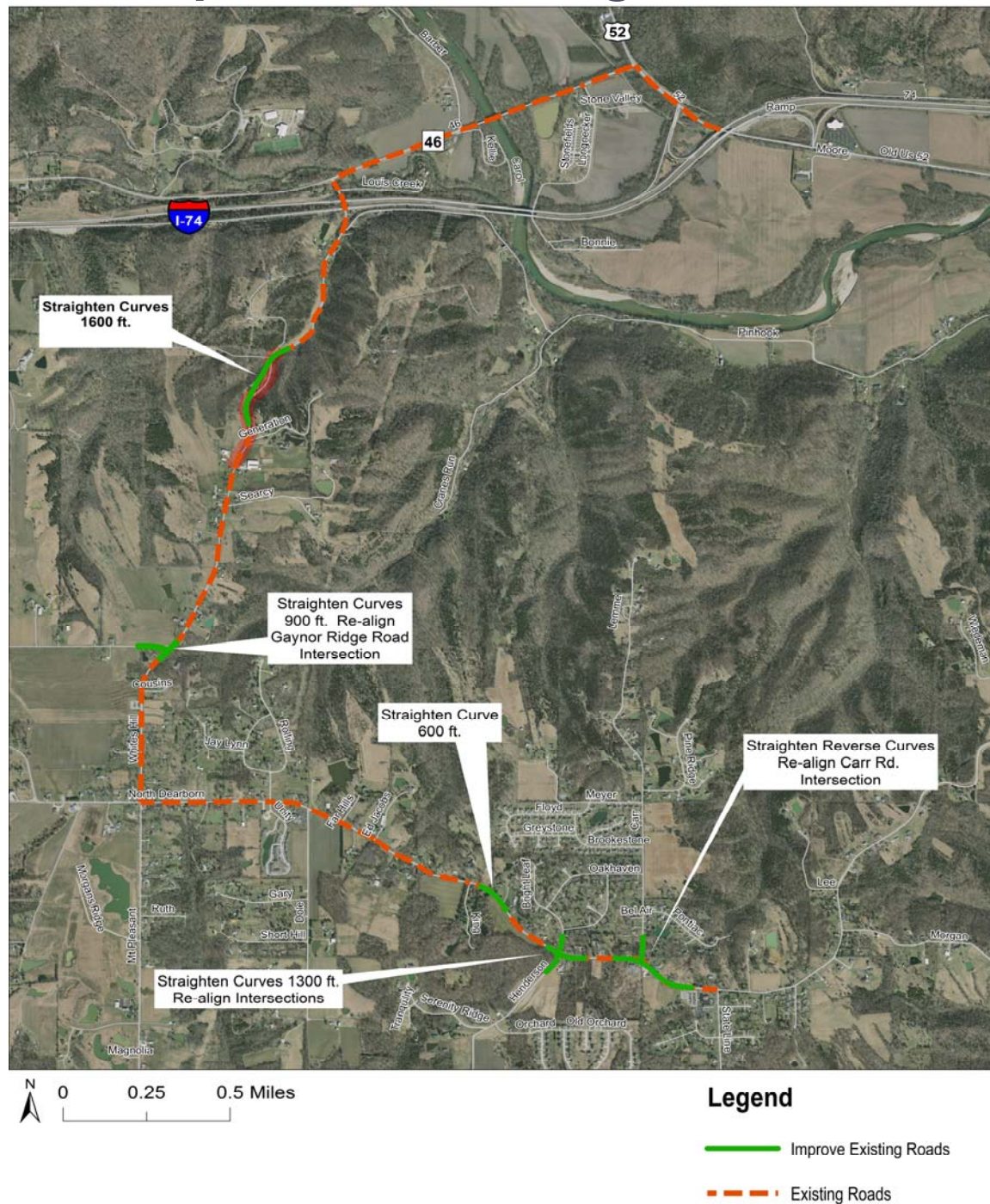


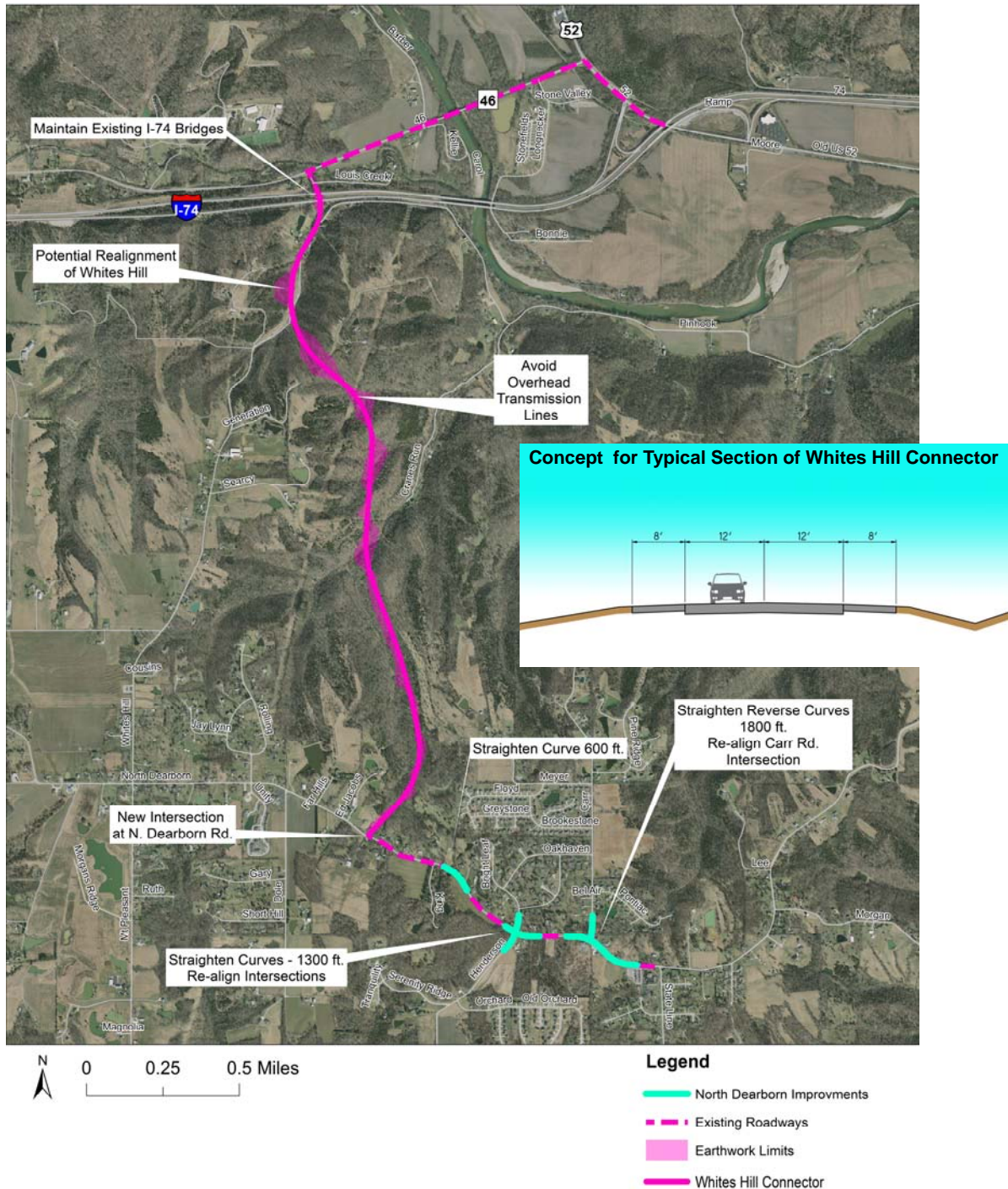
Concept 1: Improve Existing Roads



Includes spot (green) and general (orange) improvements to both existing Whites Hill Road and North Dearborn Road:

- Straighten Sharp Curves
- Flatten Steep Grades
- Intersection Re-alignments
- Widen for shoulders where possible
- Remove Roadside Obstructions (trees, poles, fences etc.)
- Add mailbox turnouts
- Replace or add guardrail as needed
- Improve signage
- Address drainage or slippage

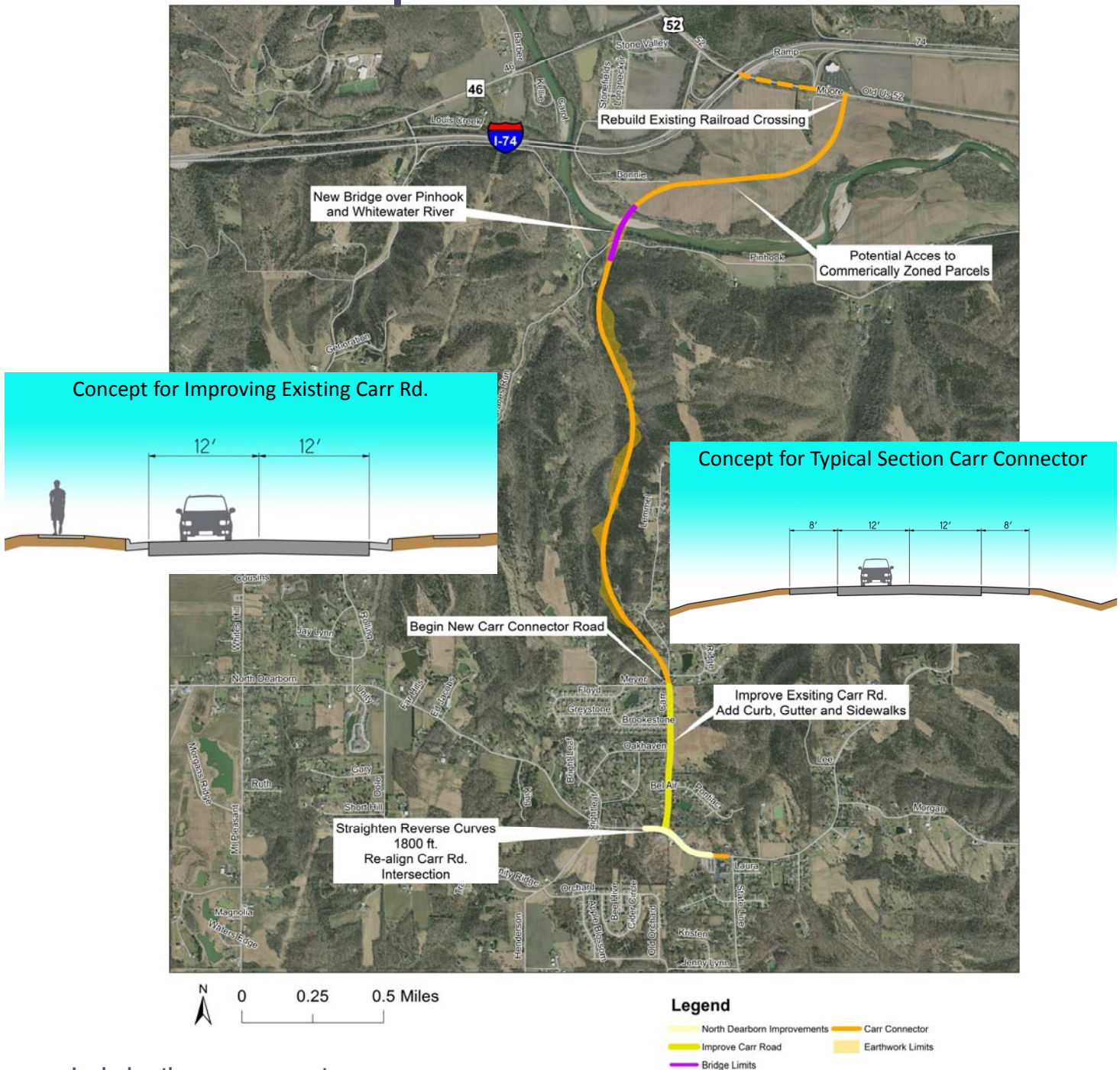
Concept 2: Whites Hill Connector



Includes two components:

- Improvements to existing North Dearborn Road described in Concept 1 (teal lines on map)
- The construction of a new roadway (Whites Hill Connector) from North Dearborn Road to Whites Hill Road (pink line on map)
 - Slopes vary depending on location
 - INDOT and Dearborn County permit use of 8 foot shoulders by bicyclists and pedestrians
 - 45 or 55 mph Design Speed
- The Whites Hill Connector is proposed to have limited access
- Potential realignment of a portion of Whites Hill Road as noted on map

Concept 3: Carr Connector



Includes three components:

- Improvements to existing North Dearborn Road from State Line Road to Carr Road
- Improvements to existing Carr Road from North Dearborn Road to Meyer/Pine Ridge Roads
- The construction of a new roadway (Carr Connector) from Meyer/Pine Ridge Roads to Old US 52

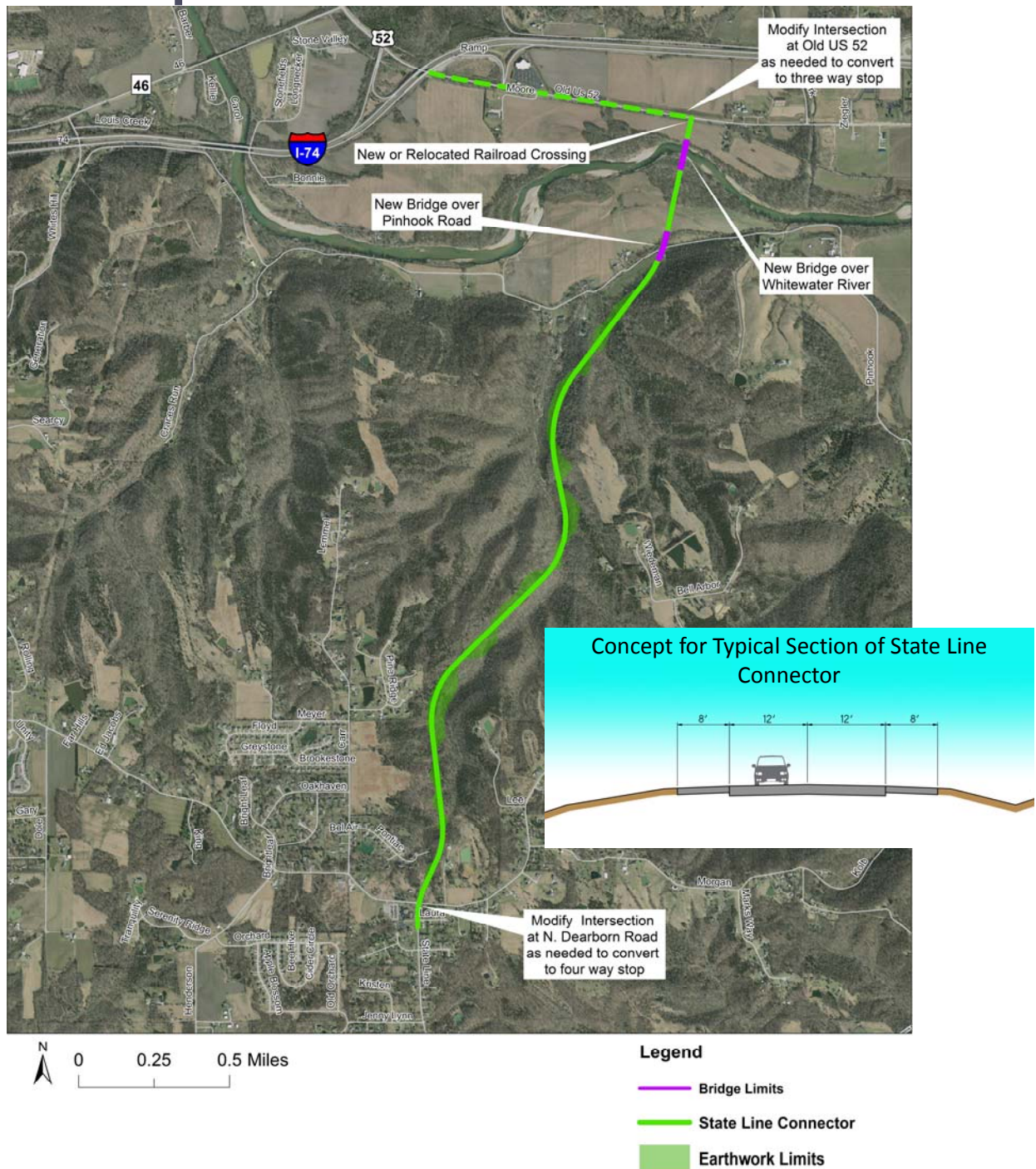
Carr Road improvements

- Generally follows existing alignment
- Minor Widening
- Construct curb and gutters
- Construct sidewalks
- 35 mph Design Speed
- Maintain Existing Driveways

Carr Connector

- Slopes vary depending on location
- 45 or 55 mph Design Speed for new connector
- INDOT and Dearborn County permit use of 8 foot shoulders by bicyclists and pedestrians
- The Carr Connector is proposed to have limited access.
- Carr Connector spans over existing Pinhook Road without providing access
- Utilizes existing at grade railroad crossing

Concept 4: State Line Connector



Includes two components:

- Construction of a new roadway (State Line Connector) from North Dearborn Road to Old US 52
- Improvements as needed at North Dearborn and Old US 52 Intersections
 - Slopes vary depending on location
 - INDOT and Dearborn County permit use of 8 foot shoulders by bicyclists and pedestrians
 - Concept does NOT identify locations for future driveways; The State Line Connector is proposed to have limited access
 - Concept shows the State Line Connector spanning over existing Pinhook Road and not providing a connection or access
 - Requires relocation of an existing at grade railroad crossing
 - Includes construction of two bridges (Pinhook and Whitewater River)
 - 45 or 55 mph Design Speed